

## MESSAGE FROM THE ASSOCIATE DEAN

**M.A. “Tonette” Krousel-Wood, MD, MSPH**

Tulane MD/MPH and MD/PhD in public health students have been *Making Waves* this past year! Being lauded for their accomplishments in receiving awards at scientific meetings for their research and publications, receiving scholarships and fellowships to support their research interests, and being selected for graduation recognition for excellence in their studies and service, our combined degree students continue to impress with their dedication and resourcefulness. We are particularly pleased to highlight multiple MD/MPH students who transitioned to our MD/PhD Program in public health—this is a record number since the program’s inception and supports our commitment to increasing the pipeline for the next generation of physician scientists!

Signaling our support to encourage women leaders, our office co-hosted the Southeastern Association of Advocates for Women in Science & Medicine (AAWSM) Conference, which was held at Tulane for the first time. The 6<sup>th</sup> annual conference was held in early April on the downtown Health Sciences Campus with over 100 junior and senior academicians from institutions across the southeast in attendance. Expert speakers from Tulane and beyond shared insights and strategies for success and to support women’s careers in the health sciences.

I am also pleased that our TL1 Pre-doctoral Research Training Program in partnership with the University of Alabama at Birmingham (UAB) Center for Clinical and Translational Science (CCTS) has been renewed with funding from the National Institutes of Health. Over the next five years, this grant award will continue to support Tulane medical and pre-doctoral students pursuing careers in translational research focused on addressing health disparities and diseases disproportionately represented in the Deep South. To date, 9 medical students have successfully participated in this year-long research-intensive mentored training program. Two Tulane students have been accepted into the newest cohort of TL1 Scholars, and we will be accepting applications for the 2020-2021 application cycle beginning in Fall 2019.

Our Class of 2019 matched in excellent residency programs in 14 different states and 11 different specialties across the spectrum of medical and surgical disciplines. These graduates also received numerous awards for their notable scholarly contributions and community service.

We hope you enjoy this edition of the *Newsletter*. We have added several new sections highlighting some of the recent achievements of our MD/MPH alumni and recognizing our MD/MPH students’ and recent graduates’ publications in scientific journals. We welcome our alumni to contact us and share any recent updates that we can feature in future editions of our Newsletter.

Please visit our website at <https://sph.tulane.edu/mdmph/home> to view more information about our programs and related opportunities. Many thanks for your continued support!

### Meet the 2019-2020 Student Group Executive Committee



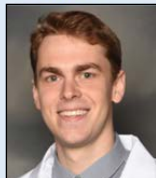
**Sandra Beauchamp**  
MD/MPH&TM Class of 2022  
Tropical Medicine



**Cameron Kilpatrick**  
MD/MPH&TM Class of 2022  
Tropical Medicine



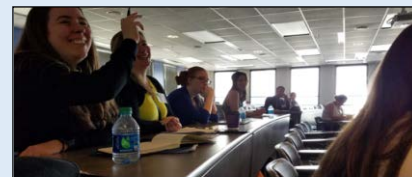
**Stephanie Portner**  
MD/MPH Class of 2022  
Global Community Health &  
Behavioral Sciences



**John Spartz**  
MD/MPH Class of 2022  
Global Environmental  
Health Sciences

### Southeastern Association of Advocates for Women in Science & Medicine (AAWSM)

The Southeastern AAWSM is a collaborative organization founded to equip future leaders in academia with the knowledge and skills needed to promote the recognition and professional development of women in academic medicine and biomedical sciences.



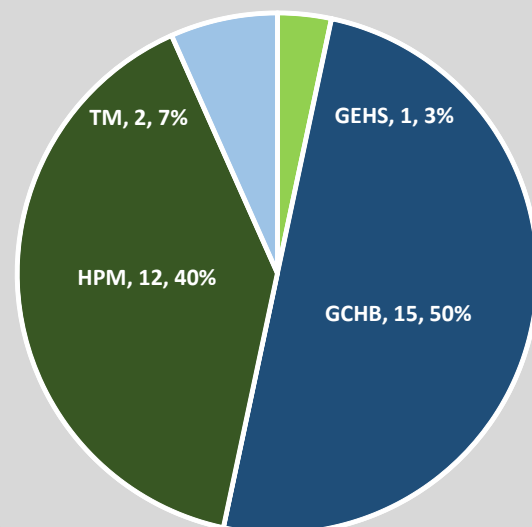
The 6<sup>th</sup> Annual Southeastern Regional AAWSM Conference was held on April 5-6<sup>th</sup>, 2019 at Tulane University and generously sponsored by the Tulane University School of Medicine and the Louisiana Clinical & Translational Science Center (LA CaTS). Over 100 attendees from seven institutions joined the conference with a majority of the attendees being students and trainees. The conference began with a dinner at Mardi Gras World with keynote speaker, Rebekah Gee, MD, MPH, Secretary of the Louisiana Department of Health (pictured above). Marie Krousel-Wood, MD, MSPH and Maureen Lichtveld, MD, MPH opened the conference as joint plenary speakers. Conference activities included three sets of concurrent sessions, a lunch & learn and poster viewings.

**MD/MPH CLASS OF 2019 RESULTS**

*Another great Match showing by Tulane's MD/MPH students! The Class of 2019 had 30 students completing the MD/MPH Program.*

First Name	Last Name	Specialty	Institution	State
Gabriela	Aviles	Family Med	Florida State Uni	FL
Jeremy	Barr	Surgery-Prelim	Penn State Med Ctr	PA
Carlo	Basilio	Internal Med	Tulane Univ	LA
Johnny	Blanchard	Internal Med	UC San Francisco	CA
Madeleine	Crilly	Family Med	LSU	LA
Aaron	Cusato	Internal Med	Naval Med Ctr	CA
Olivia	Ding	Psychiatry	Montefiore Med Ctr	NY
Peter	Doley	Internal Med	U Colorado	CO
Alixandra	Domney	OBGYN	Zucker	NY
Claire	Fitzgerald	Internal Med	Tulane Univ	LA
Maya	Groos	OBGYN	U Wisconsin	WI
Alexandra	Hamb	Family Med	Scripps Mercy Hosp	CA
Madeline	Jansen	Psychiatry	Barnes-Jewish Hosp	MO
Tyler	Jarrett	Internal Med	Olive View Med Ctr	CA
John	Jenkins	Neurology	U Colorado	CO
Joseph	Loring	Pediatrics	U New Mexico	NM
Leigh	Mahlum	OBGYN	Med Coll Wisconsin	WI
Linda	Nix	Psychiatry	Rush Uni Med Ctr	IL
Jeremy	Nudell	Internal Med	Kaiser Permanente	CA
Aderonke	Obayomi	Medicine-Prelim	Howard Uni Hosp	DC
Jonathan	Ortego	Psychiatry	Emory Uni	GA
Eleanor	Polikowsky	Surgery	Mayo Clinic	AZ
Robert	Sherburne	Anesthesiology	B I Deaconess Med Ctr	MA
David	Silver	Surgery	UPMC	PA
Aiden	Sperry	Pediatrics	Children's Hosp	CA
John	Stockton	Emergency Med	Maimonides Med Ctr	NY
Riley	Taylor	Family Med	Cook County Hosp	IL
James	Toppin	OBGYN	Ochsner	LA
Isabella	Wu	Ortho Surgery	UC San Diego Med Ctr	CA
Andrea	Yun	Emergency Med	Loyola Uni Med Ctr	IL

**2019 MD/MPH Graduates by SPHTM Department:**



Congratulations to all of our 2019 MD/MPH award recipients!

- **Linda Nix (MD/MPH 2019 Graduate)** received the John J. Walsh, MD Award for an outstanding student in the MD/MPH Program, the Magnus Memorial Achievement Award for leadership in disease prevention and health promotion programs in New Orleans and the school-level Excellence in Public Health Award given by the United States Public Health Service.
- **Carlo Basilio (MD/MPH 2019 Graduate)** received the MD/MPH Student Award for Excellence for excellence in leadership, innovation, scholarship, and likelihood to contribute to both clinical medicine and public health, as well as the MacDonald Environmental Health Sciences Outstanding Student Award.
- **Maya Groos (MD/MPH 2019 Graduate)** received the MD/MPH Student Award for Excellence for excellence in leadership, innovation, scholarship, and likelihood to contribute to both clinical medicine and public health.
- **Tyler Jarrett (MD/MPH&TM 2019 Graduate)** received the Sidney K. Simon Memorial Prize for excellence in Tropical Medicine, the Richard Freeman Prize in Medicine and a Tulane 34 award.
- **Eleanor Polikowsky (MD/MPH 2019 Graduate)** received the American Medical Women's Association Glasgow-Rubin Achievement Certificate and the Oscar Creech Award for excellence in Surgery.

**Match Results by Specialty:**

Anesthesiology	1
Emergency Medicine	2
Family Medicine	4
Internal Medicine	8
Neurology	1
Orthopaedic Surgery	1
Obstetrics & Gynecology	4
Pediatrics	2
Psychiatry	4
Surgery	3

## STUDENT SPOTLIGHT



Linda Nix – MD/MPH Class of 2019

Congratulations to Linda Nix! Linda is a 2019 MD/MPH graduate with a concentration in Global Community Health and Behavioral Sciences. She has exhibited extraordinary leadership in and commitment to improving the health of individuals and communities through her roles as a previous MD/MPH Program Vice President and an AACAP Life Members Mentorship Grant recipient. During her years at Tulane in the MD/MPH Program, Linda has been instrumental in the creation and expansion of the Homeless Hospital Liaison Program in collaboration with the Tulane Street Medicine Program with a focus on improving medical care outreach to the homeless population of New Orleans. Additionally, Linda has worked locally with Acacia-NOLA to lead efforts administering HIV and hepatitis C virus tests to homeless shelters and substance abuse treatment centers. Linda plans to continue working to help underserved communities as she moves on to her Psychiatry residency at Rush University Medical Center in Chicago.

### 2019 MD/MPH RESEARCH SCHOLARSHIPS AND FELLOWSHIPS

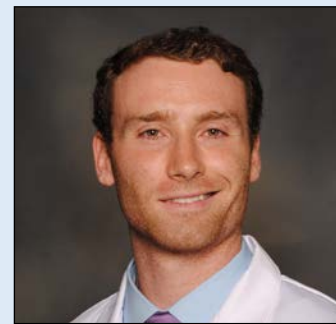
- **Faisal Kirdar (MD/MPH Class of 2022)** received a Morgadanes Research Scholarship for his project entitled, "Assessment of subclinical atherosclerosis and cognitive function in middle age."
- **Leah Steinmetz (MD/MPH Class of 2022)** received a Hoerner Research Scholarship for her project entitled, "Cervical cancer pre- and post-Hurricane Katrina."
- **Alexander Jafari (MD/MPH Class of 2022)** received a Lively Research Scholarship for his project entitled, "Development of outer membrane vesicles (OMVs) as a novel adjuvant for a vaccine against *B. pertussis*."
- **Austin Jones (MD/PhD Class of 2021)** received an ASTMH Benjamin H. Kean Travel Fellowship in Tropical Medicine for his project entitled, "Attacks on Ebola treatment facilities and Incidence of Ebola in North Kivu."

### 2019-2020 CCTS SCHOLARS

Congratulations to our 2019-2020 Tulane CCTS TL1 Scholars, **Riley Santiago and Ashkan Shahbandi!** Tulane partners with the University of Alabama at Birmingham in the Clinical and Translational Science (CCTS) TL1 training program, a NIH-funded fellowship program that prepares investigators to pursue careers in health services and clinical research focused on addressing disparities and/or diseases disproportionately represented in the Deep South.

### 2019 EICHOLD AWARD

**Benjamin Norton – MD/MPH Class of 2020**



Benjamin Norton was awarded the Eichold MD/MPH Scholarship from the Community Foundation of South Alabama for excellence in the MD/MPH Combined-Degree Program. During his past few years at Tulane, Ben founded the One Health Club with the mission to introduce medical students, public health students, and the New Orleans community to thinking about the world as an interconnected system and the importance of multi-disciplinary approaches. This club is a collaboration between the Tulane Schools of Public Health and Medicine, and events have included presentations from leaders in medicine, veterinary medicine, public health, environmental science and community justice.

### 2019 Tulane 34 Award Recipients

The Tulane 34 Award is among the most coveted university-wide honors. The award recognizes 34 graduating students from across the university who have distinguished themselves throughout their collegiate lives by demonstrating exemplary leadership, service and academic excellence. Congratulations to **Tyler Jarrett (MD/MPH&TM 2019 Graduate) and Austin Jones (MPH 2019 Graduate and MD/PhD Class of 2021)** for this honor!

## ALUMNI SPOTLIGHTS

### David Gaus, MD, MPHTM, work in Ecuador featured in New Book

**Dr. David Gaus (MD/MPHTM Class of 1992 Graduate)** was recently featured in a new book about his work in Ecuador. After completing his medical and public health training, Dr. Gaus went on to co-found and manage Andean Health & Development (AHD) in Ecuador. AHD has built two top-of-the-line hospitals in Pedro Vicente Maldonado and Santo Domingo, Ecuador. The hospitals, staffed only by Ecuadorians, train local doctors through a Family Medicine residency program and are financially self-sustaining. His work with AHD is recognized as a model for the rest of Latin America, and AHD has grown into a major player in global health, frequently partnering with the World Health Organization and other international agencies. Author Tony Hiss has recently published "Long Road from Quito" about how Dr. Gaus' vision and determination led to these accomplishments.



### Charity Dean, MD, MPH, appointed to Statewide Public Health Post

**Dr. Charity Dean (MD/MPH Class of 2005 Graduate)**, one of Santa Barbara County's most well-known and prominent physicians, was appointed Assistant Director at the California Department of Public Health in late 2018. Dr. Dean has served as public health officer at the Santa Barbara County Public Health Department since 2014, and served as Deputy Public Health Officer from 2011 to 2014. She has worked vigorously on the front lines of public health, striving to keep the community safe from influenza, valley fever, West Nile, the Zika virus and other serious illnesses.

### Michael Burgdorf, MD, MPH, received 2018 Aesthetic and Cosmetic Medicine Awards

**Dr. Michael Burgdorf (MD/MPH Class of 2001 Graduate)** is the founder and president of Music City Plastic Surgery, PLLC, one of the most prestigious plastic surgery offices in the nation, where he carefully guides patients to achieve the best version of themselves possible. An award-winning, board-certified plastic surgeon, Dr. Burgdorf specializes in performing conservative cosmetic procedures to help women regain confidence by reversing the physical impact of childbirth. Dr. Burgdorf won multiple honors at the 2018 Aesthetic and Cosmetic Medicine Awards, including Top Plastic Surgeon Middle America and Top 100 Aesthetic Doctors.

### Wes Ely, MD, MPH, hosts Medicine Grand Rounds

**Dr. Wes Ely (MD/MPH Class of 1989 Graduate)** presented a Grand Rounds lecture entitled, "A New Frontier in Critical Care: Saving the Injured Brain", at Tulane SOM this past March. The Grand Rounds lecture was co-sponsored by the Tulane SOM Department of Medicine and the Southeast Louisiana Veterans Health Care System. Dr. Ely is a professor in Pulmonary & Critical Care Medicine at Vanderbilt University Medical Center and co-director of the Center for Critical Illness, Brain dysfunction, and Survivorship (CIBS Center). Dr. Ely's research has focused on improving the care and outcomes of critically ill patients with ICU-acquired brain disease. His team developed the primary tool (CAM-ICU) which is used to measure delirium in ICU-based trials and clinically at the bedside in ICUs worldwide. Dr. Ely has been continuously federally funded for over 15 years and has over 400 peer-reviewed publications. Dr. Ely is the principal investigator on a new \$17 million NIA sponsored R01 to establish the first brain repository from former ICU patients to define the dementia acquired by these patients during and after critical care with hopes to reduce human suffering and magnify human dignity.



### Lydia Bazzano, MD, PhD, selected to serve on federal Dietary Guidelines Advisory Committee

The US Departments of Agriculture and Health and Human Services selected Tulane University clinical researcher and epidemiologist **Dr. Lydia Bazzano (MD/MPH Class of 2002 Graduate and current MD/MPH Epidemiology Program Faculty Advisor)** as one of 20 nationally recognized nutrition experts to serve on the 2020 Dietary Guidelines Advisory Committee. The independent committee will help federal officials draft the next update to the Dietary Guidelines for Americans, which serve as the cornerstone of federal nutrition programs and policies. The next edition of the guidelines will take a life-stage approach for dietary recommendations and for the first time, will include recommendations for pregnant women and children from birth to 24 months. The committee will review scientific evidence on specific nutrition and health related topics and scientific questions that, for the first time, reflect both public comments and federal agency input.

To submit information about alumni activities please contact: Rachael Ruiz Currier at 504-988-1145; [r Ruiz1@tulane.edu](mailto:r Ruiz1@tulane.edu)

**PEER-REVIEWED PUBLICATIONS 2016-2019**

**Congratulations to the MD/MPH students active in the joint-degree program from 2016-2019 who authored or co-authored the following peer-reviewed publications!**

1. Traglia M, Bseiso D, Gusev A, **Adviento B**, Park DS, Mefford JA, Zaitlen N, Weiss LA. Genetic Mechanisms Leading to Sex Differences Across Common Diseases and Anthropometric Traits. *Genetics*. 2016.
2. Ma BB, **Bloch J**, Krumholz A, Hopp, JL, Foreman PJ, Soderstrom CA, Scottino, MA, Matsumoto M, and Krauss GL. Regulating drivers with epilepsy in Maryland: Results of the application of a United States consensus guideline. *Epilepsia* 2017
3. **Callaghan CM**, Wang L, Alluri A, Lauve A, Boyer C, Russell W. Low-dose-rate prostate brachytherapy: 4-8 week postimplant prostate-specific antigen a novel predictor of biochemical failure-free survival. *Brachytherapy*. 2017 Nov - Dec;16(6):1119-1128. doi: 10.1016/j.brachy.2017.07.016.
4. Burns JD, Sestokas Rindler R, **Carr C**, Lau H, Cervantes-Arslanian AM, Green-LaRoche DM, Salem R, Kase CS. Delay in Diagnosis of Basilar Artery Stroke. *Neurocritical Care*. 2016, Apr; 24(2): 172 - 179. PMID: 26503513.
5. **Conway DJ**, Coughlin R, Caldwell A, Shearer D. The Institute for Global Orthopaedics and Traumatology: A model for academic collaboration in orthopaedic surgery. *Frontiers in Public Health*. 2017, Jun; 5(146). PMID: 28713803.
6. Chkotho L, Mkandawire N, **Conway D**, Wu HH, Shearer D, Hallan G, Gjertsen JE, Young S, Lau BC. Validation and reliability of the Chichewa translation of the EQ-5D quality of life questionnaire in adults with orthopaedic injuries in Malawi. *Malawi Medical Journal*. 2017, Jun; 29(2): 84-88.
7. Lau BC, **Conway D**, Curran PF, Feeley BT, & Pandya NK. Bipolar bone loss in patients with anterior shoulder dislocation: A comparison of adolescents versus adult patients. *Arthroscopy*. 2017, Apr; Epub ahead of print. Cited in PubMed; PMID: 28624240.
8. Witters P, **Debbold E**, Crivelly K, Kerckhove K, Corthouts K, Debbold B, Andersson H, Vannieuwenborg L, Geuens S, Baumgartner M, Kozicz T, Settles L, Morava E. "Autism in patients with propionic acidemia." *Molecular Genetics and Metabolism*. (119) 317-321, (2016).
9. **Groos M**, Wallace M, Hardeman R, Theall K. Measuring Inequity: A Systematic Review of Methods Used to Quantify Structural Racism. *Journal of Health Disparities Research and Practice* Volume 11, Issue 2, Summer 2018, pp. 190-206
10. **Huo S**, Scialli AR, McGarvey S, Hill E, Tugertimur B, Hogenmiller A, Hirsch AI, Fugh-Berman A. Treatment of Men for "Low Testosterone": A Systematic Review. *PLoS One*. 2016 Sep 21;11(9):e0162480.
11. Wright MC, **Jensen K**, Mohamed H, Drake C, Mohsin K, Monlezun D, Alsaleh N, Kandi E. Concomitant thyroid disease and primary hyperparathyroidism in patients undergoing parathyroidectomy or thyroidectomy. *Gland Surg* 2017
12. **Koretz ZA**, Athanikar AN, Lee MP, Valenzuela AA. Orbital deep granuloma annulare in an adult. *Vision Pan-America, The Pan-American Journal of Ophthalmology*. 2017 Jun 21;16(2):61-3.
13. Zabar, S., Adams, J., **Kurland, S.**, Shaker-Brown, A., Porter, B., Horlick, M., Gillespie, C. Charting a Key Competency Domain: Understanding Resident Physician Interprofessional Collaboration (IPC) Skills. *Journal of General Internal Medicine*, 1-8, 2016.
14. **Lenane Z**, Peacock E, Joyce C, Frohlich ED, Re RN, Muntner P, Krousel-Wood M. Association of Post-Traumatic Stress Disorder Symptoms Following Hurricane Katrina With Incident Cardiovascular Disease Events Among Older Adults With Hypertension. *Am J Geriatr Psychiatry*. 2018 Nov 25. pii: S1064-7481(18)30577-3. doi: 10.1016/j.jagp.2018.11.006. [Epub ahead of print]
15. O'Connor K., **Obayomi A.**, Brooks J., & Murina A. A Pilot Study on the Effectiveness of Oral Case Presentation Evaluations for Medical Students. *Journal of the American Academy of Dermatology*. 2018, Sep; Volume 79(3): AB18
16. Evers-Meltzer R., Alldredge V., **Obayomi A.**, Accetta J., & Murina A. Scarring Alopecia: The Knowledge, Attitudes and Referral Patterns of Hair Stylists and Barbers. *Journal of the American Academy of Dermatology*. 2017, Jun; Volume 76(6): AB225
17. Diego Mota Lopes; Edgar M. Carvalho; Maria Ilma Araujo; Robson da Paixão de Souza; **Brady Page**, Luciana Santos Cardoso. Susceptibility of dendritic cells from individuals with schistosomiasis to infection by *Leishmania braziliensis*. *Mol Immunol*. 2018 Jan;93:173-183. doi: 10.1016/j.molimm.2017.11.018.
18. Van Tilburg M, Rouster A, **Silver DS**, Pellegrini G, Gao J, Hyman PE. Development and Validation of a Rome III Functional Gastrointestinal Disorders Questionnaire for Infants and Toddlers. *J Pediatr Gastroenterol Nutr*. 2016;62(3):384-386
19. Rouster AS, Karpinski AC, **Silver DS**, Monagas J, Hyman PE. Functional gastrointestinal disorders dominate pediatric gastroenterology outpatient practice. *J Pediatr Gastroenterol Nutr*. 2016;62(6):847-851.
20. **Silver DS**, Pointer DT, Slakey DP. Solid Tumors of the Spleen: Evaluation and Management. *J Am Coll Surg*. 2017;224(6):1104-1111
21. Rebecca Schroll, MD, **David Swift**, BS, Danielle Tatum, PhD, Stuart Couch, BS, Jiselle B. Heaney MD, MPH, Monica Llado-Farrulla, MD, Shana Zucker, BA, Frances Gill, BA, Griffin Brown, BS, Nicholas Buffin, BS, Juan Duchesne, MD. Accuracy of Shock Index Versus ABC Score to Predict Need for Massive Transfusion in Trauma Patients. *Injury* Jan 2018; 49:1, 15-19.
22. Schroll, R. Lipscey, M, Grayson, CT, Heaney, J. **Swift, D.**, Hunt, J. Marr, A. Duchesne, J. The CDC Definition For VAP Surveillance Lacks Clinical Significance in Trauma ICU Patients. *Critical Care Medicine*: 2016; 44 :-12, 361.
23. Krych AJ, **Wu IT**, Desai VS, Murthy NS, Collins MS, Saris DBF, Levy BA, Stuart MJ. High rate of missed lateral meniscus posterior root tears on preoperative magnetic resonance imaging. *Orthop J Sports Med*. 2018 Apr 9;6(4):2325967118765722. eCollection 2018 Apr. PMID: 29662913
24. Hevesi M, Hartigan DE, **Wu IT**, Levy BA, Domb BG, Krych AJ. Are results of arthroscopic labral repair durable in dysplasia at midterm follow-up? A 2-center matched cohort analysis. *Am J Sports Med*. 2018 Jun;46(7):1674-1684. Epub 2018 May 3. PMID: 29723044
25. **Wu IT**, Custers RJH, Desai VS, Pareek A, Stuart MJ, Saris DBF, Krych AJ. Internal fixation of unstable osteochondritis dissecans: do open growth plates improve healing rate? *Am J Sports Med*. 2018 Jul 1:363546518783737. [Epub ahead of print] PMID: 29995442
26. **Wu IT**, Hevesi M, Desai VS, Camp CL, Dahm DL, Levy BA, Stuart MJ, Krych AJ. Comparative outcomes of radial and bucket-handle meniscal tear repair: a propensity-matched analysis. *Am J Sports Med*. 2018 Aug 2:363546518786035. doi: 10.1177/0363546518786035. [Epub ahead of print] PMID: 30070592

**For more information about Public Health and Medical Education please contact:**

M. A. Krousel-Wood, MD, MSPH

Associate Dean

504-988-1145; [mawood@tulane.edu](mailto:mawood@tulane.edu)

Adam Maese, MS

Director

504-988-7055; [amaese@tulane.edu](mailto:amaese@tulane.edu)

Rachael Ruiz Currier, MPH

Senior Program Coordinator

504-988-1145; [ruiz1@tulane.edu](mailto:ruiz1@tulane.edu)