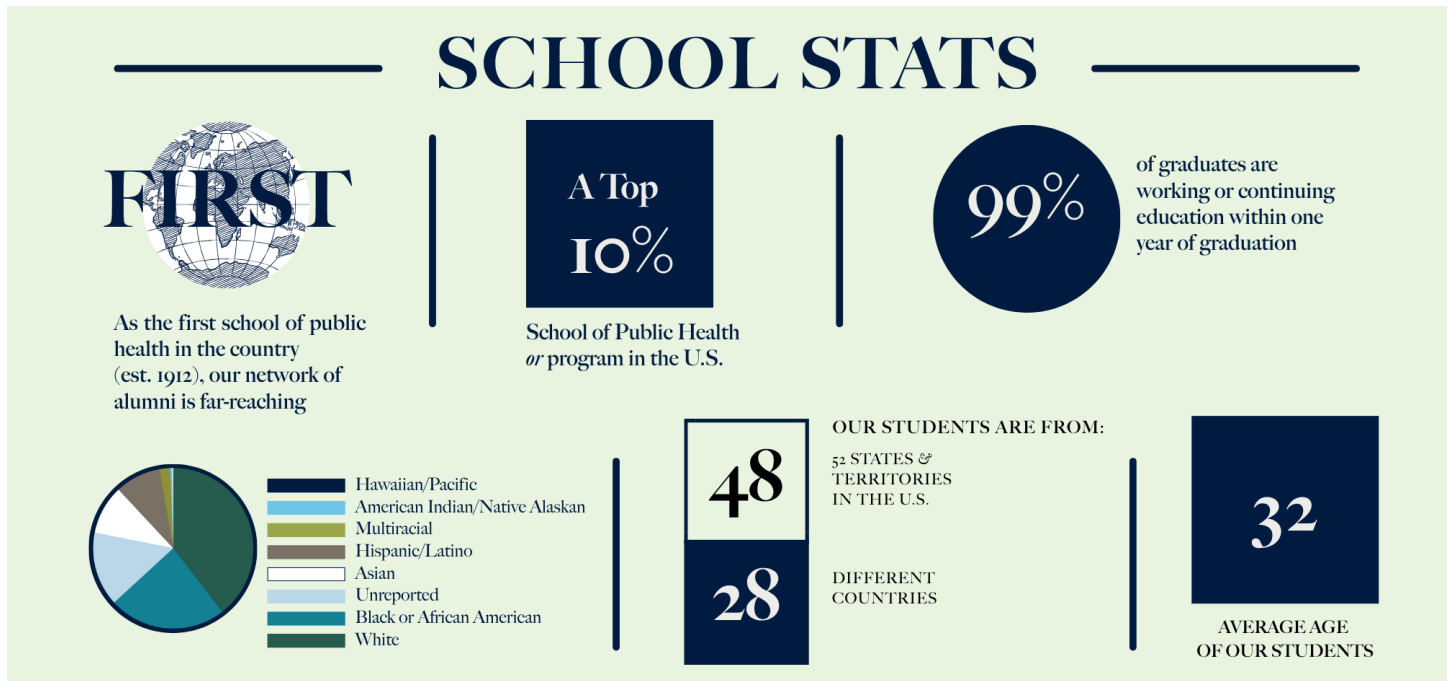


# A Guide for College Pre-Health Advisors

Graduate Public Health Programs at Celia Scott Weatherhead School of Public Health & Tropical Medicine

## School Snapshot



## Understanding the Degrees: MPH vs MS vs MHA

Three master's degrees. Very different paths. Here is what sets each one apart.

	MPH	MS	MHA
<b>Degree type</b>	Professional practice	Academic research	Management and leadership
<b>Best for</b>	Students from any background who want to work in public health practice, policy, or global health	STEM students who want deep specialization or are considering a PhD	Business and management students who want to lead healthcare organizations
<b>Credits</b>	45-47	31-45	48
<b>Length</b>	1.5-2 years full-time	1.5-2 years full-time	22 months (cohort)
<b>Format</b>	On campus or online	On campus (Health Security also online)	On campus (Fall only) or online
<b>Start terms</b>	Fall, Spring, Summer	Fall, Spring, Summer	On campus: Fall only. Online: Fall, Spring, Summer
<b>Work exp.</b>	Not required	Not required	Not required (on campus). Online MHA: 2+ years health-related exp.
<b>GRE</b>	Not required	Not required	Not required
<b>Path to PhD</b>	Possible but not typical	Strong stepping stone	Not a typical PhD path

All three degrees are available at Tulane WSPH. No GRE is required for any program. [Compare all degrees](#)

## Which Students Are a Good Fit?

Public health graduate programs are open to students from nearly any undergraduate background. No GRE required for any program.

### By undergraduate major

Student background	Relevant programs
Pre-health (pre-med, nursing, pharmacy)	MPH in Epidemiology, MPH in Health Policy, MD/MPH dual degree
STEM (biology, chemistry, data science)	MS in Epidemiology, MS in Biostatistics, MPH in Epidemiology, MPH in Environmental Health Sciences
Social sciences and humanities	MPH in Social, Behavioral, and Population Sciences, MPH in Health Policy, MPH in International Health and Sustainable Development
Business and management	MHA, MPH in Health Policy
International and global focus	MPH in International Health and Sustainable Development, MS in Tropical Medicine, DrPH in International Health and Sustainable Development
Pre-law and policy track	MPH in Health Policy, JD/MPH dual degree, JD/MHA dual degree

### By career goal

Career goal	Relevant programs
Policy and advocacy	MPH in Health Policy, MPH in Social, Behavioral, and Population Sciences
Research	MS or PhD in Epidemiology, Biostatistics, Environmental Health Sciences
Clinical settings	MPH paired with a health professional degree (MD/MPH, JD/MPH, dual degrees)
Global health and humanitarian work	MPH or DrPH in International Health and Sustainable Development, MS in Tropical Medicine
Healthcare administration and leadership	MHA, MPH in Health Systems Management (MD/MPH combined degree students only)
Health security and emergency preparedness	MS in Health Security
Community health and education	MPH in Social, Behavioral, and Population Sciences, MPH in Community Health Sciences

[Browse all 33 programs at Tulane WSPH](#)

## Admissions Quick Reference

- ◇ No GRE required for any WSPH program.
- ◇ No published minimum GPA for master's programs. Context and trajectory are considered.
- ◇ Most programs offer Fall, Spring, and Summer entry. PhD and DrPH IHSD are Fall-only.
- ◇ Application system: SOPHAS for most on-campus programs and all doctoral programs. Separate WSPH form for MHA and most online programs. [How to apply](#)
- ◇ Letters of recommendation: 2 for master's programs, 3 for doctoral.
- ◇ Applications submitted by the priority deadline are automatically considered for merit-based funding - no separate scholarship application needed. [Tuition, funding, and scholarships](#)

## Key Deadlines

Program	Final deadline
On-Campus MPH / MS	Spring: Dec 1   Summer: Mar 15   Fall: Jun 15
On-Campus MS Clinical Investigation	Spring: Dec 1   Summer: Apr 1   Fall: Jul 1
On-Campus PhD	Fall: Dec 1
Online MPH / MS	Spring: Dec 1   Summer: Apr 1   Fall: Jul 1
On-Campus MHA	Fall: Jul 1
Online MHA	Spring: Dec 1   Summer: Apr 1   Fall: Jul 1
Online DrPH - IHSD track	Fall: Jan 15
Online DrPH - SBPS track	Spring: Jul 1   Fall: Jan 15

- ◇ Online MHA additional requirement: minimum 2 years of health-related work experience and employer support. Designed for working professionals - not a direct path from undergrad.
- ◇ DrPH additional requirement: minimum 3 years of professional public health experience and an MPH or related master's degree. Advisors should direct students earlier in their careers toward the MPH first.
- ◇ [Full deadlines and how to apply](#)

## Addressing Common Hesitations

<p><b>"I'm not a science person"</b></p> <p>No science background required for MPH or MHA. No GRE. Encourage students to reach out to admissions directly.</p>	<p><b>"I don't know what I want to do yet"</b></p> <p>The MPH is designed for students still figuring out their direction. It provides both a foundation and a specialization.</p>
<p><b>"I can't afford graduate school"</b></p> <p>Applications submitted by the priority deadline are automatically considered for funding. Encourage students to apply early.</p>	<p><b>"I don't have enough experience"</b></p> <p>Most master's programs require no work experience. The exception is the online MHA, which requires 2 years of health-related experience.</p>

## How to Refer Students to WSPH

- ◇ Direct students to [sph.tulane.edu](http://sph.tulane.edu) to explore programs.
- ◇ Encourage them to attend a Talk to Us Tuesday session or a virtual info session - low-barrier, no commitment, direct access to admissions staff.
- ◇ Connect them with the admissions team directly for program-specific questions.
- ◇ Remind them: no GRE, no minimum GPA, three start terms for most programs.

## Contact Admissions

### Office of Enrollment Management

P: 504.988.5388

[sphmadmissions@tulane.edu](mailto:sphmadmissions@tulane.edu)

Admissions info: [sph.tulane.edu/admissions](http://sph.tulane.edu/admissions)

Connect with us / info sessions: [sph.tulane.edu/connect-with-us](http://sph.tulane.edu/connect-with-us)

**Request a session or materials:** <https://sph.tulane.edu/prehealth-advisors-contact>

