

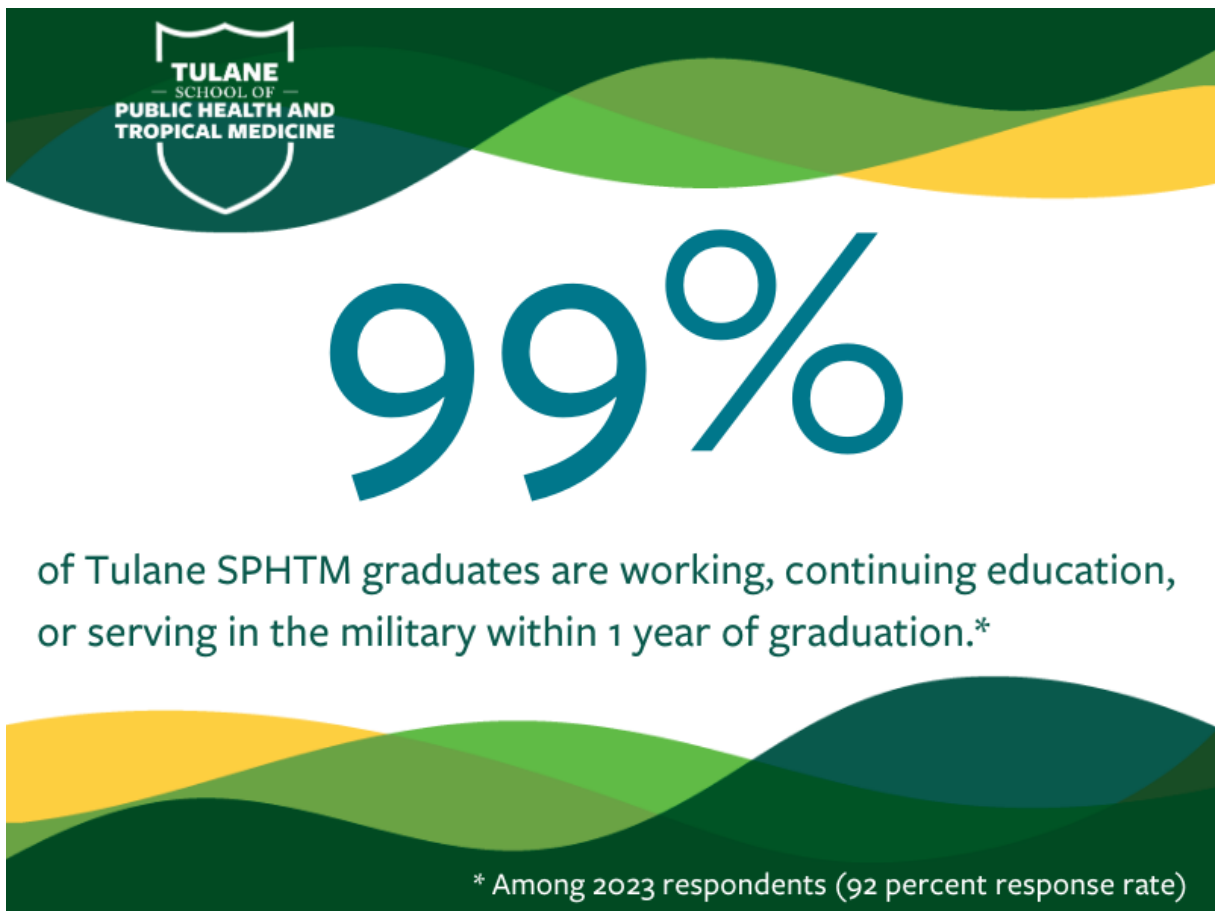
Tulane SPHTM graduates find positive employment outcomes 99 percent of the time

Thu, 06/27/2024 - 12:01

|

David Gladow dgladow@tulane.edu

[View PDF](#)



Tulane School of Public Health and Tropical Medicine graduates are at an advantageous position in regards to finding work, and the difference versus recent historical precedent is apparent.

The release of [the 2023 Tulane SPHTM graduate outcomes report](#) has revealed that school graduates for a second straight year have a 99 percent employment rate.

99 percent of all graduates are working, volunteering, serving in the military, or continuing education within one year of graduation, according to the survey, which reached out to 511 students and saw a 92 percent response rate.

It was the third straight year at or above 99 percent, while it was the fourth straight year over 96 percent. Those numbers compare favorably to the industry standard from recent years.

According to [a Columbia-written report](#) analyzing public health graduates nationwide from 2015-2018, the placement rate for public health grads over that period was roughly 94 percent.

The 2023 Tulane report included the graduating classes of August 2022, December 2022, and May 2023, and was composed of bachelor (32 percent), master (60 percent), and doctoral (4 percent) graduates.

The median starting annual salary range reported by recent SPHTM graduates was \$60,000 - \$69,999, a rise from a 2021 reported figure of \$50,000 - \$59,000, even though salary data reported by graduates includes those that reported working as fellows or as full-time volunteers (i.e. Peace Corps), which typically offer a stipend and not a salary.

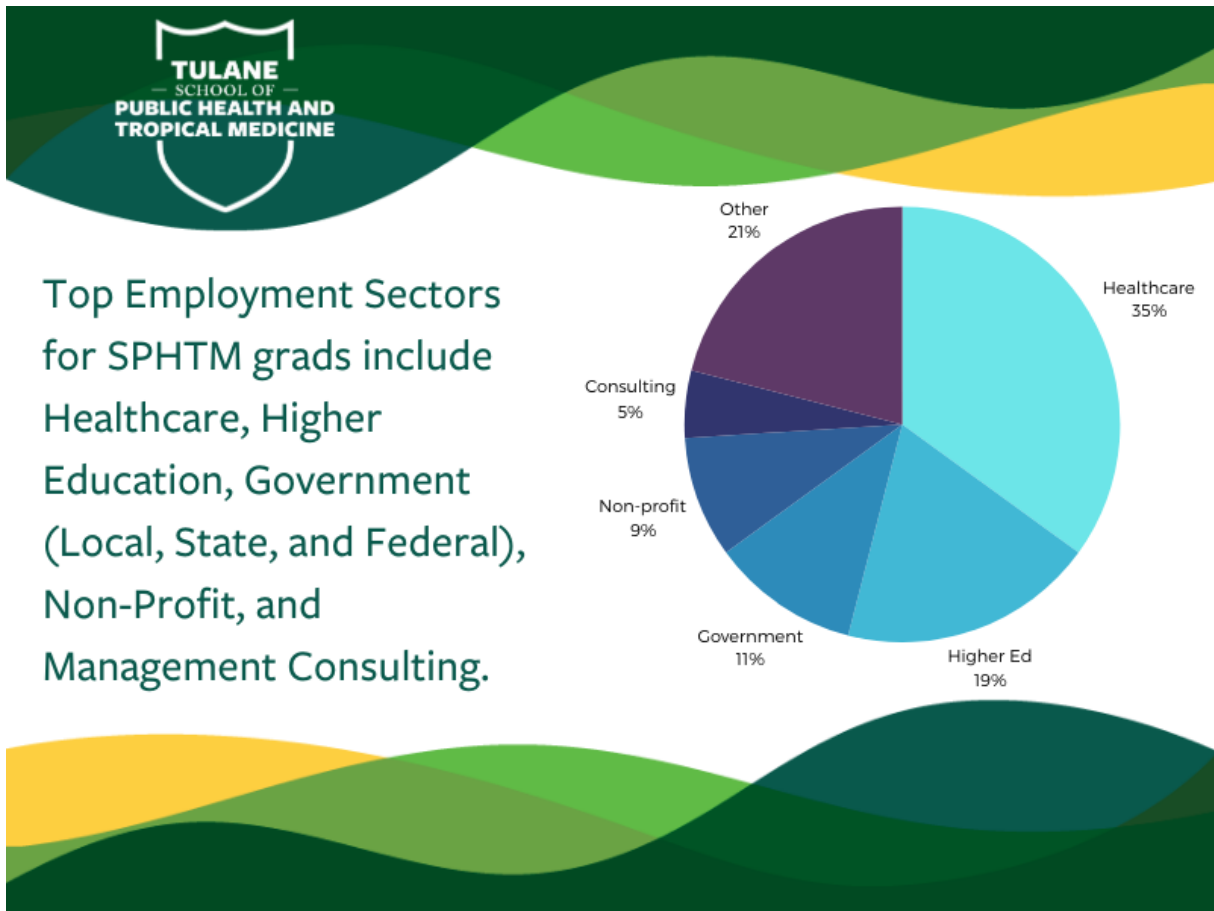
The most well-paid graduates in terms of starting salary were found among graduates of Biostatistics and Data Science as well as Environmental Health Sciences.

The top employers of recent SPHTM graduates by sector included healthcare (35.3 percent), higher education (18.8 percent), government (10.6 percent), non-profit (8.7 percent), and management/consulting (4.8 percent). Additional sectors included research, biotech & life sciences, financial services, and legal & law enforcement, among others.

SPHTM alums continue to find work all over the world. The 11 most popular cities for employment after graduation included New Orleans, Atlanta, Baltimore, Boston, Chicago, Houston, Los Angeles, New York City, Philadelphia, San Francisco, and

Washington D.C.

International landing spots included Abidjan, West Africa; Geneva, Switzerland, Sakakah, Al-Jowf Saudi Arabia, Marseille, France; and Toronto, among others.





Tulane SPHTM graduates find work all over the world. Many find homes in locations such as Washington D.C. and right here in New Orleans, but others end up in faraway spots like Abidjan, Geneva, or Sakakah, Al-Jowf.

